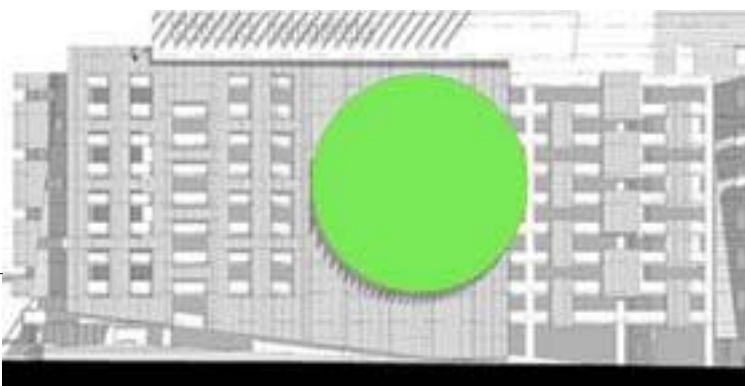
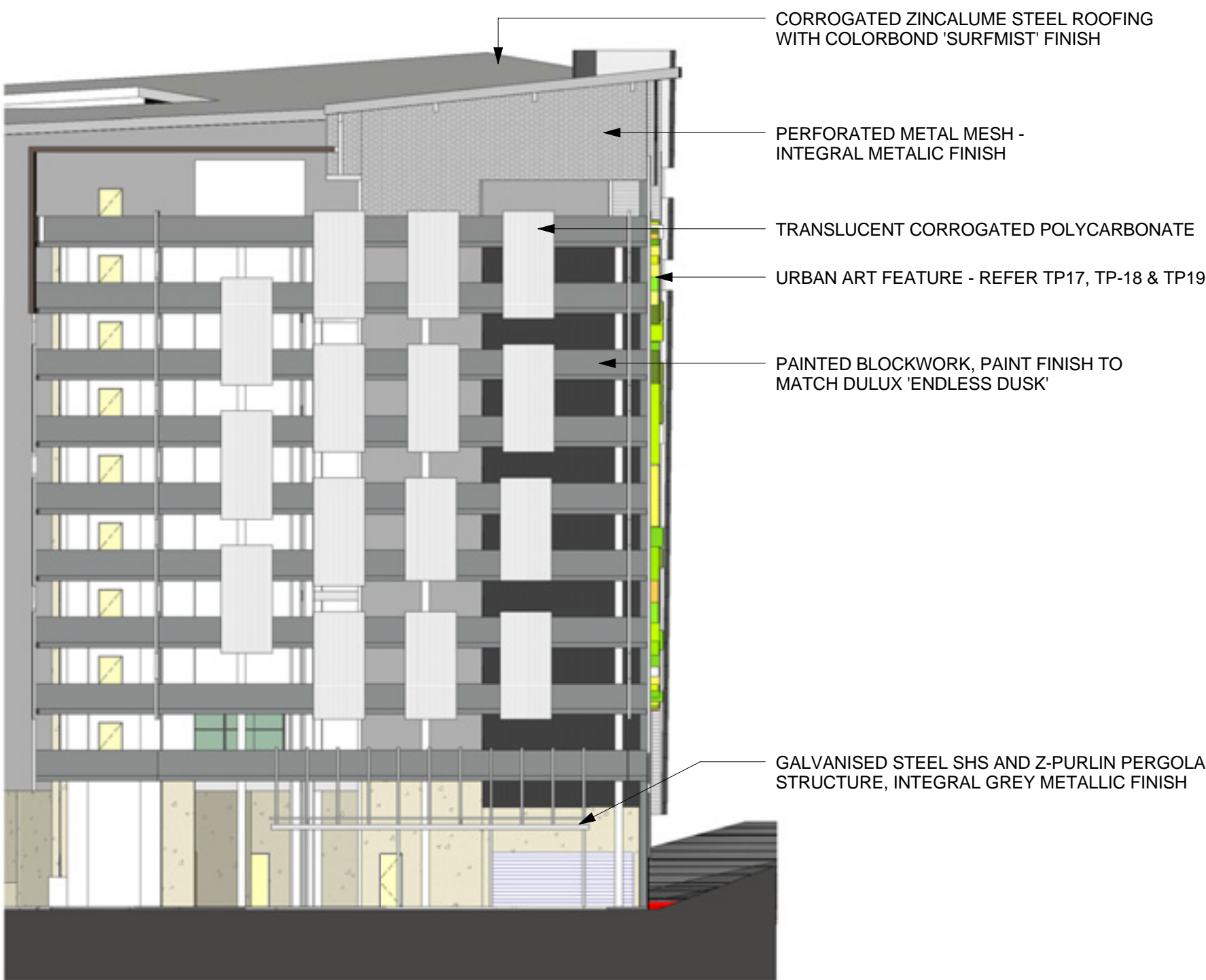
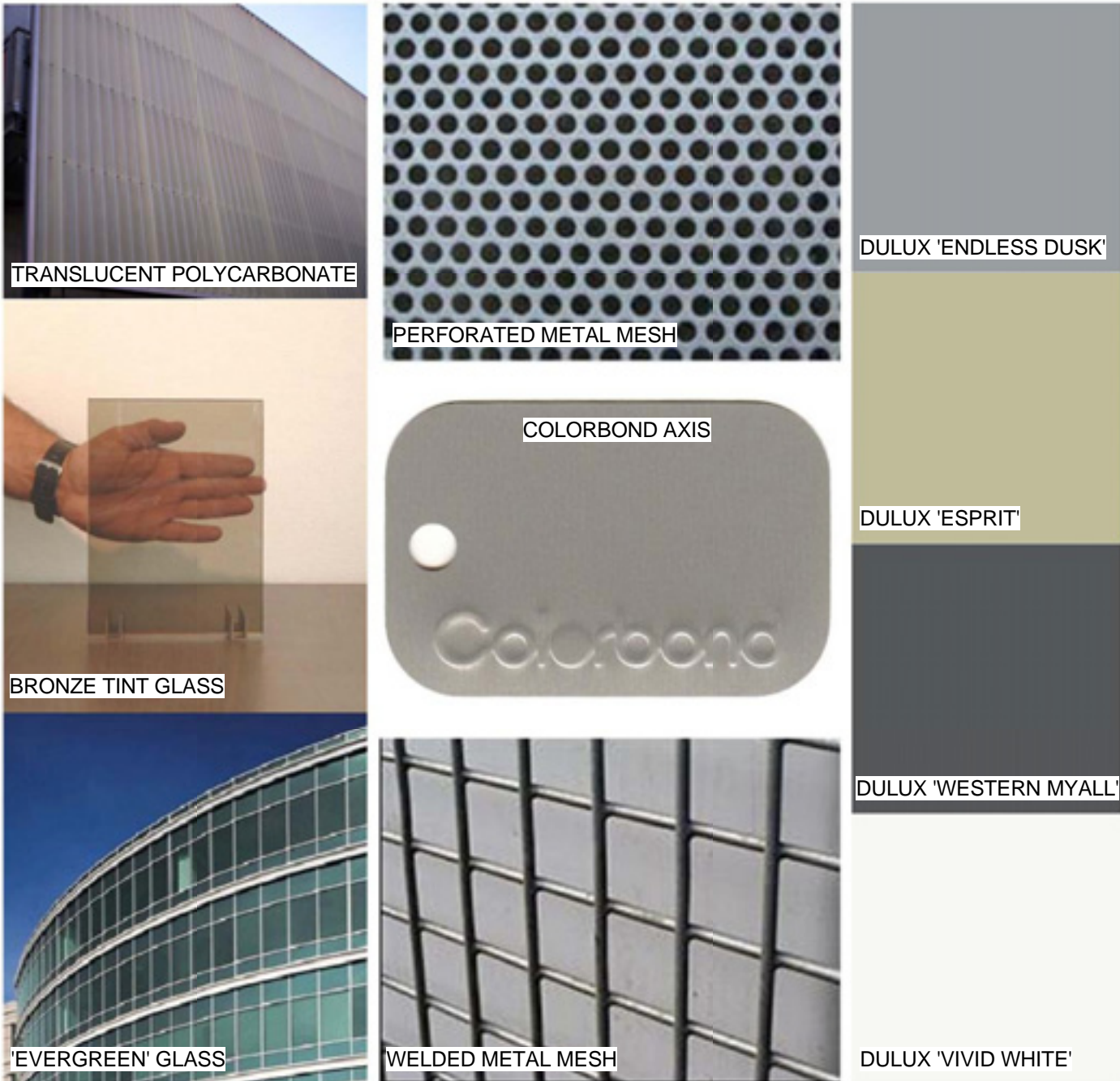




LEGEND

- EXPRESS JOINTED, PRE-SEALED COMPRESSED FIBRE CEMENT PANELS, FACTORY POLYURETHANE FINISH TO MATCH DULUX 'WESTERN MYALL'
- EXPRESS JOINTED, PRE-SEALED COMPRESSED FIBRE CEMENT PANELS, FACTORY POLYURETHANE FINISH TO MATCH DULUX 'ESPRIT'
- REINFORCED CONCRETE, PAINT FINISH TO MATCH DULUX 'ESPRIT'
- PERFORATED METAL MESH - INTEGRAL METALLIC FINISH
- TRANSLUCENT CORRUGATED POLYCARBONATE, INTEGRAL FINISH
- RIBBED ZINCALUME STEEL SHEETING WITH METALLIC FINISH, COLORBOND 'AXIS'
- GALVANISED STEEL WELDED MESH - INTEGRAL GREY METALLIC FINISH
- COMPRESSED FIBRE CEMENT, PAINTED FINISH TO MATCH DULUX 'ENDLESS DUSK'
- COMPRESSED FIBRE CEMENT, PAINTED TO MATCH DULUX 'VIVID WHITE'
- GLASS WITH 'EVERGREEN' BASE COLOUR
- GLASS WITH 'BRONZE' BASE COLOUR



<div>NEYLAN GROUP</div> <div>ARCHITECTURE & URBAN DESIGN</div> <div>www.neylangroup.com</div>		DA BROCHURE	MATERIALS AND FINISHES			
Office Development, Helensvale			ARCHITECTURAL DRAWINGS	<div>Project number0713</div> <div>Date10/08/07</div>	<div></div>	TP-30
HORIZONTAL INVESTMENT PTY LTD					1:400 @ A3	Scale1 : 200